

# Doe Run Backgrounder

## Metals Division – Resource Recycling

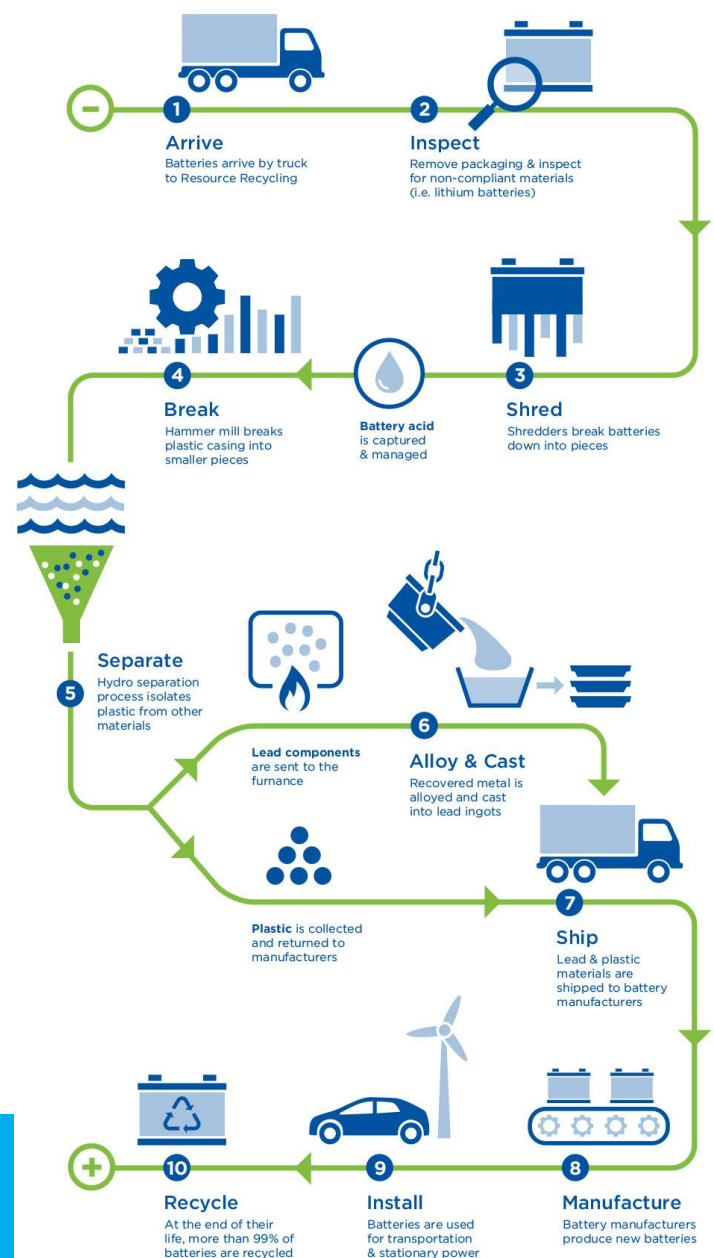
Located in Boss, Missouri, Resource Recycling is a part of The Doe Run Company’s (Doe Run) Metals Division. As one of the world’s largest, single-site recycling centers, Resource Recycling processes approximately 8 million spent lead batteries each year – returning valuable lead metal to use in car batteries and renewable energy storage. Resource Recycling plays a vital role in helping lead batteries maintain a 99% recycle rate.

### History

As one of the world’s largest, single-site lead recycling facilities, Doe Run’s Resource Recycling facility is an important part of the circular economy of lead batteries. Since 1991, Resource Recycling has recycled enough lead batteries to circle the globe.

### Facts

- Resource Recycling processes and recycles nearly 400 million pounds of lead-bearing material annually.
- Lead batteries power over 275 million cars and trucks in the U.S. and provide more than 70% of the world’s rechargeable energy storage needs, including renewable energy.
- In the U.S., 70% of the domestic demand for lead is met through recycling and the circular nature of the lead battery industry.
- 90% of our domestic lead demand is used to manufacture new batteries.
- Lead batteries are the most recycled consumer product; according to the U.S. Environmental Protection Agency (EPA), 99% of lead batteries are recycled.
- New lead batteries are generally made up of 80% recycled lead.
- In addition to batteries, recycled materials include lead bullets, lead-containing glass from old television and computer screens, and lead-based paint chips from abatement projects.
- Resource Recycling also operates a cable processing facility that recovers lead from collected telephone and electrical cable.



**We recycle an average of 8 million batteries per year**

## Facility Performance

- Resource Recycling operates under Resource Conservation and Recovery Act (RCRA) Part B Hazardous Waste Facility Permits issued by the Missouri Department of Natural Resources and reviewed by the EPA.
- Resource Recycling holds ISO 9001:2015 quality management systems and ISO 14001:2015 environmental management systems certifications as evidence of its commitment to high quality and environmental stewardship.
- The facility closely follows industry health and safety standards and continuously evaluates ways to improve safety. Resource Recycling has reached 1 million safe work hours without a lost-time injury three times since it opened in 1991, including in 2012, 1998 and 1993.



## Community Involvement

- Resource Recycling sponsors an annual summer internship program for college students.
- Employees help deliver Doe Run's Minerals Education Program, which includes minerals-related outreach initiatives to local communities.



### Contact

Resource Recycling (Metals Division)  
 18594 Highway KK  
 Boss, MO 65440-9501  
 (573) 626-3395  
[www.doerun.com](http://www.doerun.com)